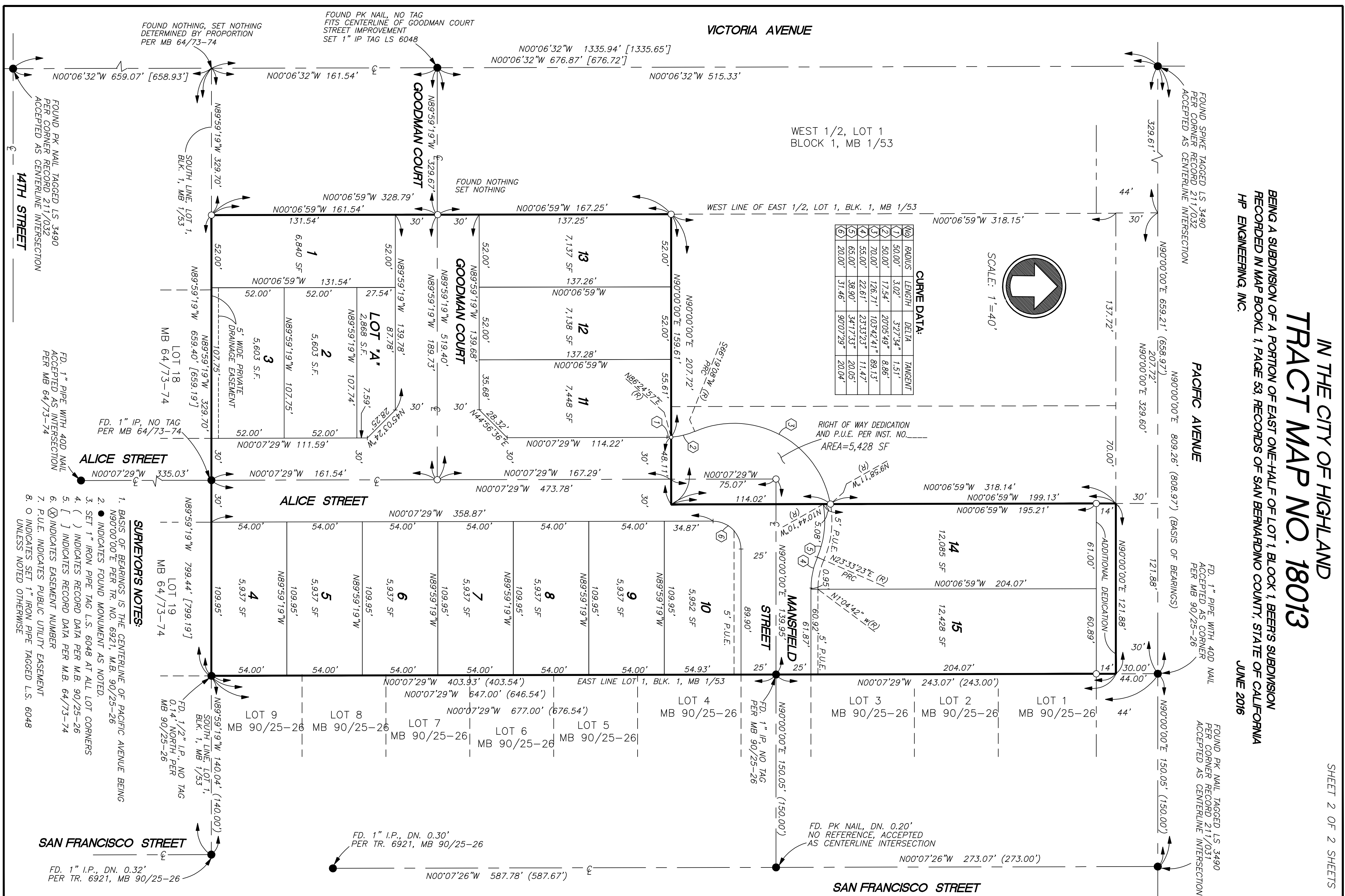


# IN THE CITY OF HIGHLAND TRACT MAP NO. 18013

SHEET 2 OF 2 SHEETS

BEING A SUBDIVISION OF A PORTION OF EAST ONE-HALF OF LOT 1, BLOCK 1, BEERS SUBDIVISION  
RECORDED IN MAP BOOK 1, PAGE 53, RECORDS OF SAN BERNARDINO COUNTY, STATE OF CALIFORNIA  
HP ENGINEERING, INC. JUNE 2016



**SURVEYOR'S NOTES:**

1. BASIS OF BEARINGS IS THE CENTERLINE OF PACIFIC AVENUE BEING N90°00'00"E PER TR. NO. 6921, M.B. 90/25-26
2. INDICATES FOUND MONUMENT AS NOTED.
3. SET 1" IRON PIPE TAG L.S. 6048 AT ALL LOT CORNERS
4. ( ) INDICATES RECORD DATA PER M.B. 90/25-26
5. [ ] INDICATES RECORD DATA PER M.B. 64/73-74
6. (X) INDICATES EASEMENT NUMBER
7. P.U.E. INDICATES PUBLIC UTILITY EASEMENT
8. O INDICATES SET 1" IRON PIPE TAGGED L.S. 6048 UNLESS NOTED OTHERWISE

FD. 1" I.P., DN. 0.32'  
PER TR. 6921, MB 90/25-26

FD. PK NAIL, DN. 0.20'  
NO REFERENCE, ACCEPTED  
AS CENTERLINE INTERSECTION

FOUND PK NAIL TAGGED LS 3490  
PER CORNER RECORD 211/031  
ACCEPTED AS CENTERLINE INTERSECTION

FD. 1" PIPE WITH 40D NAIL  
ACCEPTED AS CORNER  
PER MB 90/25-26

PACIFIC AVENUE

FOUND SPIKE TAGGED LS 3490  
PER CORNER RECORD 211/032  
ACCEPTED AS CENTERLINE INTERSECTION

FOUND PK NAIL TAGGED LS 3490  
PER CORNER RECORD 211/032  
ACCEPTED AS CENTERLINE INTERSECTION

14TH STREET

FD. 1" I.P., DN. 0.32'  
PER TR. 6921, MB 90/25-26

SAN FRANCISCO STREET

FD. 1/2" I.P., NO TAG  
0.14 NORTH PER  
MB 90/25-26

FD. 1" IP, NO TAG  
PER MB 90/25-26

FD. 1" I.P., DN. 0.30'  
PER TR. 6921, MB 90/25-26

FD. 1" PIPE WITH 40D NAIL  
ACCEPTED AS INTERSECTION  
PER MB 64/73-74

FD. 1" IP, NO TAG  
PER MB 64/73-74

LOT 18  
MB 64/73-74

SOUTH LINE LOT 1,  
BLK. 1, MB 1/53

FOUND PK NAIL TAGGED LS 3490  
PER CORNER RECORD 211/032  
ACCEPTED AS CENTERLINE INTERSECTION

14TH STREET

FD. 1" I.P., DN. 0.32'  
PER TR. 6921, MB 90/25-26

SAN FRANCISCO STREET

FD. 1/2" I.P., NO TAG  
0.14 NORTH PER  
MB 90/25-26

FD. 1" IP, NO TAG  
PER MB 90/25-26

FD. 1" I.P., DN. 0.30'  
PER TR. 6921, MB 90/25-26

FD. 1" PIPE WITH 40D NAIL  
ACCEPTED AS INTERSECTION  
PER MB 64/73-74

FD. 1" IP, NO TAG  
PER MB 64/73-74

LOT 18  
MB 64/73-74

SOUTH LINE LOT 1,  
BLK. 1, MB 1/53

FOUND PK NAIL TAGGED LS 3490  
PER CORNER RECORD 211/032  
ACCEPTED AS CENTERLINE INTERSECTION

14TH STREET

FD. 1" I.P., DN. 0.32'  
PER TR. 6921, MB 90/25-26

SAN FRANCISCO STREET

FD. 1/2" I.P., NO TAG  
0.14 NORTH PER  
MB 90/25-26

FD. 1" IP, NO TAG  
PER MB 90/25-26

FD. 1" I.P., DN. 0.30'  
PER TR. 6921, MB 90/25-26

FD. 1" PIPE WITH 40D NAIL  
ACCEPTED AS INTERSECTION  
PER MB 64/73-74

FD. 1" IP, NO TAG  
PER MB 64/73-74

LOT 18  
MB 64/73-74

SOUTH LINE LOT 1,  
BLK. 1, MB 1/53

FOUND PK NAIL TAGGED LS 3490  
PER CORNER RECORD 211/032  
ACCEPTED AS CENTERLINE INTERSECTION

14TH STREET

FD. 1" I.P., DN. 0.32'  
PER TR. 6921, MB 90/25-26

SAN FRANCISCO STREET

FD. 1/2" I.P., NO TAG  
0.14 NORTH PER  
MB 90/25-26

FD. 1" IP, NO TAG  
PER MB 90/25-26

FD. 1" I.P., DN. 0.30'  
PER TR. 6921, MB 90/25-26

FD. 1" PIPE WITH 40D NAIL  
ACCEPTED AS INTERSECTION  
PER MB 64/73-74

FD. 1" IP, NO TAG  
PER MB 64/73-74

LOT 18  
MB 64/73-74

SOUTH LINE LOT 1,  
BLK. 1, MB 1/53

FOUND PK NAIL TAGGED LS 3490  
PER CORNER RECORD 211/032  
ACCEPTED AS CENTERLINE INTERSECTION

14TH STREET

FD. 1" I.P., DN. 0.32'  
PER TR. 6921, MB 90/25-26

SAN FRANCISCO STREET

FD. 1/2" I.P., NO TAG  
0.14 NORTH PER  
MB 90/25-26

FD. 1" IP, NO TAG  
PER MB 90/25-26

FD. 1" I.P., DN. 0.30'  
PER TR. 6921, MB 90/25-26

FD. 1" PIPE WITH 40D NAIL  
ACCEPTED AS INTERSECTION  
PER MB 64/73-74

FD. 1" IP, NO TAG  
PER MB 64/73-74

LOT 18  
MB 64/73-74

SOUTH LINE LOT 1,  
BLK. 1, MB 1/53

FOUND PK NAIL TAGGED LS 3490  
PER CORNER RECORD 211/032  
ACCEPTED AS CENTERLINE INTERSECTION

14TH STREET

FD. 1" I.P., DN. 0.32'  
PER TR. 6921, MB 90/25-26

SAN FRANCISCO STREET

FD. 1/2" I.P., NO TAG  
0.14 NORTH PER  
MB 90/25-26

FD. 1" IP, NO TAG  
PER MB 90/25-26

FD. 1" I.P., DN. 0.30'  
PER TR. 6921, MB 90/25-26

FD. 1" PIPE WITH 40D NAIL  
ACCEPTED AS INTERSECTION  
PER MB 64/73-74

FD. 1" IP, NO TAG  
PER MB 64/73-74

LOT 18  
MB 64/73-74

SOUTH LINE LOT 1,  
BLK. 1, MB 1/53

FOUND PK NAIL TAGGED LS 3490  
PER CORNER RECORD 211/032  
ACCEPTED AS CENTERLINE INTERSECTION

14TH STREET

FD. 1" I.P., DN. 0.32'  
PER TR. 6921, MB 90/25-26

SAN FRANCISCO STREET

FD. 1/2" I.P., NO TAG  
0.14 NORTH PER  
MB 90/25-26

FD. 1" IP, NO TAG  
PER MB 90/25-26

FD. 1" I.P., DN. 0.30'  
PER TR. 6921, MB 90/25-26

FD. 1" PIPE WITH 40D NAIL  
ACCEPTED AS INTERSECTION  
PER MB 64/73-74

FD. 1" IP, NO TAG  
PER MB 64/73-74

LOT 18  
MB 64/73-74

SOUTH LINE LOT 1,  
BLK. 1, MB 1/53

FOUND PK NAIL TAGGED LS 3490  
PER CORNER RECORD 211/032  
ACCEPTED AS CENTERLINE INTERSECTION

14TH STREET

FD. 1" I.P., DN. 0.32'  
PER TR. 6921, MB 90/25-26

SAN FRANCISCO STREET

FD. 1/2" I.P., NO TAG  
0.14 NORTH PER  
MB 90/25-26

FD. 1" IP, NO TAG  
PER MB 90/25-26

FD. 1" I.P., DN. 0.30'  
PER TR. 6921, MB 90/25-26

FD. 1" PIPE WITH 40D NAIL  
ACCEPTED AS INTERSECTION  
PER MB 64/73-74

FD. 1" IP, NO TAG  
PER MB 64/73-74

LOT 18  
MB 64/73-74

SOUTH LINE LOT 1,  
BLK. 1, MB 1/53

FOUND PK NAIL TAGGED LS 3490  
PER CORNER RECORD 211/032  
ACCEPTED AS CENTERLINE INTERSECTION

14TH STREET

FD. 1" I.P., DN. 0.32'  
PER TR. 6921, MB 90/25-26

SAN FRANCISCO STREET

FD. 1/2" I.P., NO TAG  
0.14 NORTH PER  
MB 90/25-26

FD. 1" IP, NO TAG  
PER MB 90/25-26

FD. 1" I.P., DN. 0.30'  
PER TR. 6921, MB 90/25-26

FD. 1" PIPE WITH 40D NAIL  
ACCEPTED AS INTERSECTION  
PER MB 64/73-74

FD. 1" IP, NO TAG  
PER MB 64/73-74

LOT 18  
MB 64/73-74

SOUTH LINE LOT 1,  
BLK. 1, MB 1/53

FOUND PK NAIL TAGGED LS 3490  
PER CORNER RECORD 211/032  
ACCEPTED AS CENTERLINE INTERSECTION

14TH STREET

FD. 1" I.P., DN. 0.32'  
PER TR. 6921, MB 90/25-26

SAN FRANCISCO STREET

FD. 1/2" I.P., NO TAG  
0.14 NORTH PER  
MB 90/25-26

FD. 1" IP, NO TAG  
PER MB 90/25-26

FD. 1" I.P., DN. 0.30'  
PER TR. 6921, MB 90/25-26

FD. 1" PIPE WITH 40D NAIL  
ACCEPTED AS INTERSECTION  
PER MB 64/73-74

FD. 1" IP, NO TAG  
PER MB 64/73-74

LOT 18  
MB 64/73-74

SOUTH LINE LOT 1,  
BLK. 1, MB 1/53

FOUND PK NAIL TAGGED LS 3490  
PER CORNER RECORD 211/032  
ACCEPTED AS CENTERLINE INTERSECTION

14TH STREET

FD. 1" I.P., DN. 0.32'  
PER TR. 6921, MB 90/25-26

SAN FRANCISCO STREET

FD. 1/2" I.P., NO TAG  
0.14 NORTH PER  
MB 90/25-26

FD. 1" IP, NO TAG  
PER MB 90/25-26

FD. 1" I.P., DN. 0.30'  
PER TR. 6921, MB 90/25-26

FD. 1" PIPE WITH 40D NAIL  
ACCEPTED AS INTERSECTION  
PER MB 64/73-74

FD. 1" IP, NO TAG  
PER MB 64/73-74

LOT 18  
MB 64/73-74

SOUTH LINE LOT 1,  
BLK. 1, MB 1/53

FOUND PK NAIL TAGGED LS 3490  
PER CORNER RECORD 211/032  
ACCEPTED AS CENTERLINE INTERSECTION

14TH STREET

FD. 1" I.P., DN. 0.32'  
PER TR. 6921, MB 90/25-26

SAN FRANCISCO STREET

FD. 1/2" I.P., NO TAG  
0.14 NORTH PER  
MB 90/25-26

FD. 1" IP, NO TAG  
PER MB 90/25-26

FD. 1" I.P., DN. 0.30'  
PER TR. 6921, MB 90/25-26

FD. 1" PIPE WITH 40D NAIL  
ACCEPTED AS INTERSECTION  
PER MB 64/73-74

FD. 1" IP, NO TAG  
PER MB 64/73-74

LOT 18  
MB 64/73-74

SOUTH LINE LOT 1,  
BLK. 1, MB 1/53

FOUND PK NAIL TAGGED LS 3490  
PER CORNER RECORD 211/032  
ACCEPTED AS CENTERLINE INTERSECTION

14TH STREET

FD. 1" I.P., DN. 0.32'  
PER TR. 6921, MB 90/25-26

SAN FRANCISCO STREET

FD. 1/2" I.P., NO TAG  
0.14 NORTH PER  
MB 90/25-26

FD. 1" IP, NO TAG  
PER MB 90/25-26

FD. 1" I.P., DN. 0.30'  
PER TR. 6921, MB 90/25-26

FD. 1" PIPE WITH 40D NAIL  
ACCEPTED AS INTERSECTION  
PER MB 64/73-74

FD. 1" IP, NO TAG  
PER MB 64/73-74

LOT 18  
MB 64/73-74

SOUTH LINE LOT 1,  
BLK. 1, MB 1/53

FOUND PK NAIL TAGGED LS 3490  
PER CORNER RECORD 211/032  
ACCEPTED AS CENTERLINE INTERSECTION

14TH STREET

FD. 1" I.P., DN. 0.32'  
PER TR. 6921, MB 90/25-26

SAN FRANCISCO STREET

FD. 1/2" I.P., NO TAG  
0.14 NORTH PER  
MB 90/25-26

FD. 1" IP, NO TAG  
PER MB 90/25-26

FD. 1" I.P., DN. 0.30'  
PER TR. 6921, MB 90/25-26

FD. 1" PIPE WITH 40D NAIL  
ACCEPTED AS INTERSECTION  
PER MB 64/73-74

FD. 1" IP, NO TAG  
PER MB 64/73-74

LOT 18  
MB 64/73-74

SOUTH LINE LOT 1,  
BLK. 1, MB 1/53

FOUND PK NAIL TAGGED LS 3490  
PER CORNER RECORD 211/032  
ACCEPTED AS CENTERLINE INTERSECTION

14TH STREET

FD. 1" I.P., DN. 0.32'  
PER TR. 6921, MB 90/25-26

SAN FRANCISCO STREET

FD. 1/2" I.P., NO TAG  
0.14 NORTH PER  
MB 90/25-26

FD. 1" IP, NO TAG  
PER MB 90/25-26

FD. 1" I.P., DN. 0.30'  
PER TR. 6921, MB 90/25-26

FD. 1" PIPE WITH 40D NAIL  
ACCEPTED AS INTERSECTION  
PER MB 64/73-74

FD. 1" IP, NO TAG  
PER MB 64/73-74

LOT 18  
MB 64/73-74

SOUTH LINE LOT 1,  
BLK. 1, MB 1/53

FOUND PK NAIL TAGGED LS 3490  
PER CORNER RECORD 211/032  
ACCEPTED AS CENTERLINE INTERSECTION

14TH STREET

FD. 1" I.P., DN. 0.32'  
PER TR. 6921, MB 90/25-26

SAN FRANCISCO STREET

FD. 1/2" I.P., NO TAG  
0.14 NORTH PER  
MB 90/25-26

FD. 1" IP, NO TAG  
PER MB 90/25-26

FD. 1" I.P., DN. 0.30'  
PER TR. 6921, MB 90/25-26

FD. 1" PIPE WITH 40D NAIL  
ACCEPTED AS INTERSECTION  
PER MB 64/73-74

FD. 1" IP, NO TAG  
PER MB 64/73-74

LOT 18  
MB 64/73-74

SOUTH LINE LOT 1,  
BLK. 1, MB 1/53

FOUND PK NAIL TAGGED LS 3490  
PER CORNER RECORD 211/032  
ACCEPTED AS CENTERLINE INTERSECTION

14TH STREET

FD. 1" I.P., DN. 0.32'  
PER TR. 6921, MB 90/25-26

SAN FRANCISCO STREET

FD. 1/2" I.P., NO TAG  
0.14 NORTH PER  
MB 90/25-26